

Sustainable Schools



- supporting student learning & environmental citizenship for tomorrow's sustainability challenges

NSW Department of Education & Training

NSW Public Schools – Leading the Way www.det.nsw.edu.au

Mark Caddey
Sustainable Schools Coordinator
Curriculum K-12 Directorate



Sustainable Schools

Structures & Policies - NSW & Australia

Learning Resources

School Planning – a NSW perspective

Energy Education Program

NSW Department of Education & Training

NSW Public Schools – Leading the Way www.det.nsw.edu.au

Mark Caddey
Sustainable Schools Coordinator
Curriculum K-12 Directorate



Policies

NSW Department of Education & Training

Environmental Education Policy
for schools 2001

Student Learning is focussed on

- School Grounds
- Resource Management

Schools develop a School
Environmental Management Plan



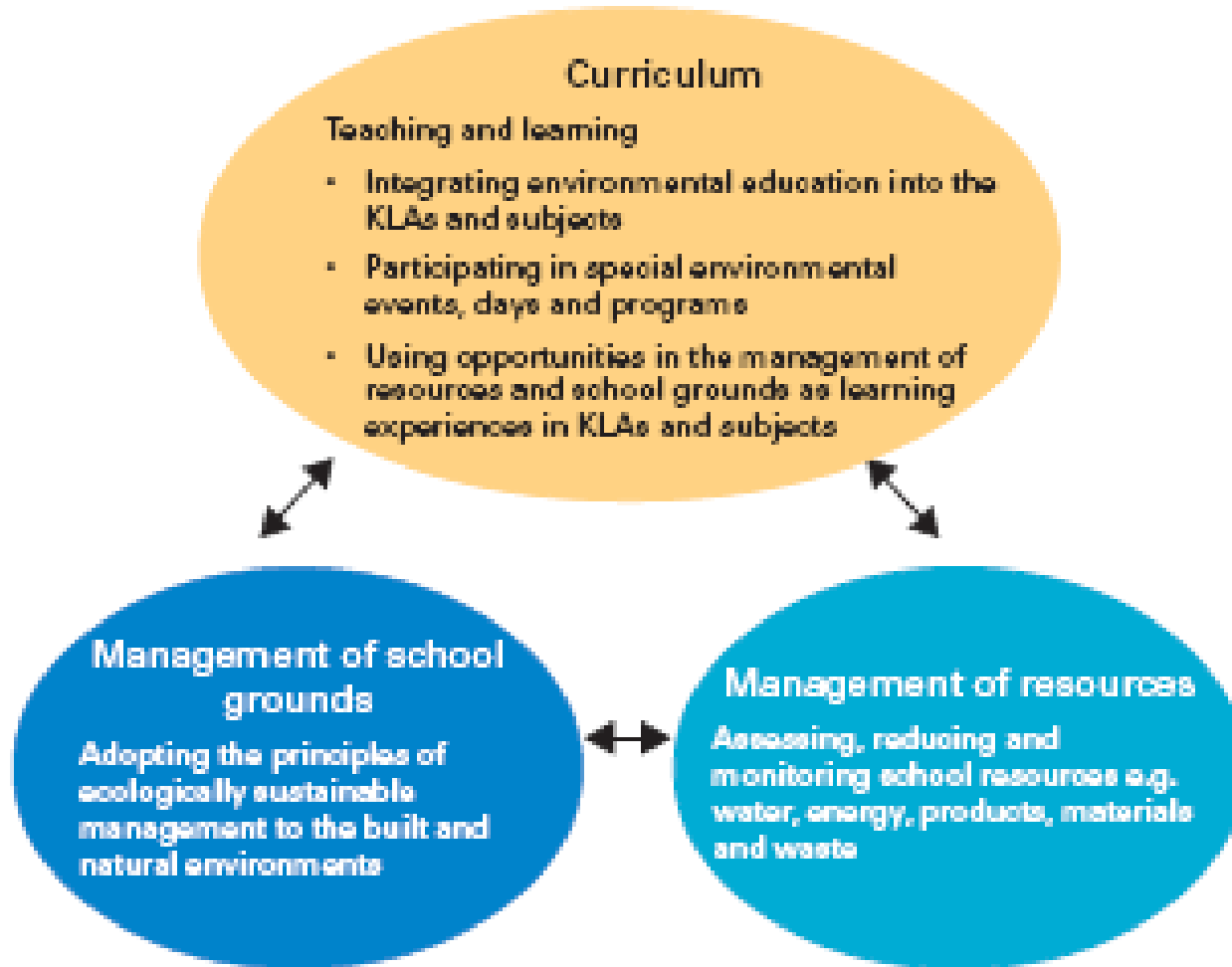
NSW Department of Education & Training

NSW Public Schools – Leading the Way www.det.nsw.edu.au

Mark Caddey
Sustainable Schools Coordinator
Curriculum K-12 Directorate



NSW Environmental Education Policy for schools 2001



Environmental Education Policy 2001

- supports a programmed, syllabus linked approach to students learning about the environment.



NSW Department of Education & Training

NSW Public Schools – Leading the Way www.det.nsw.edu.au

Mark Caddey
Sustainable Schools Coordinator
Curriculum K-12 Directorate

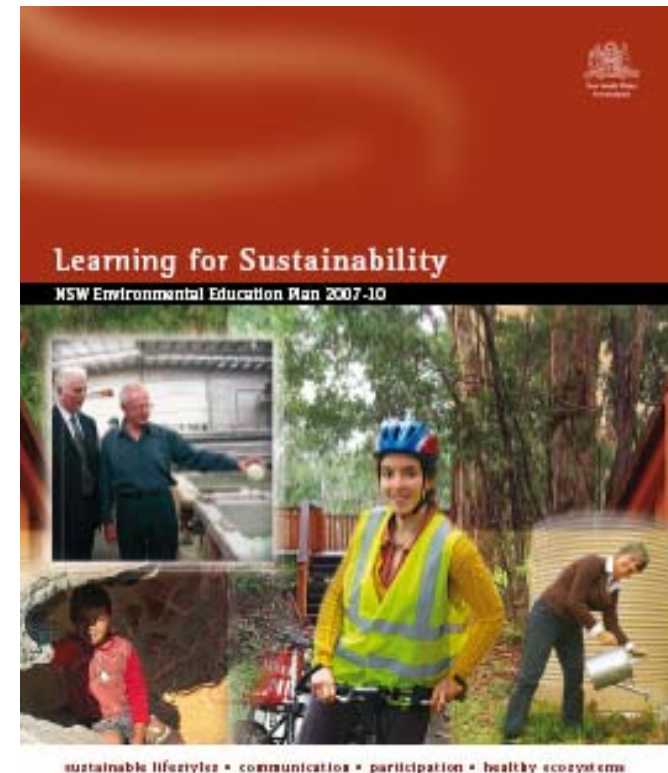


NSW Environmental Education State Plan

‘Learning for Sustainability’

Linking environmental education actions state and local government departments, non-government organisations and other groups with common objectives

- allows a collaborative approach to achieving outcomes



NSW Department of Education & Training

NSW Public Schools – Leading the Way www.det.nsw.edu.au

Mark Caddey
Sustainable Schools Coordinator
Curriculum K-12 Directorate

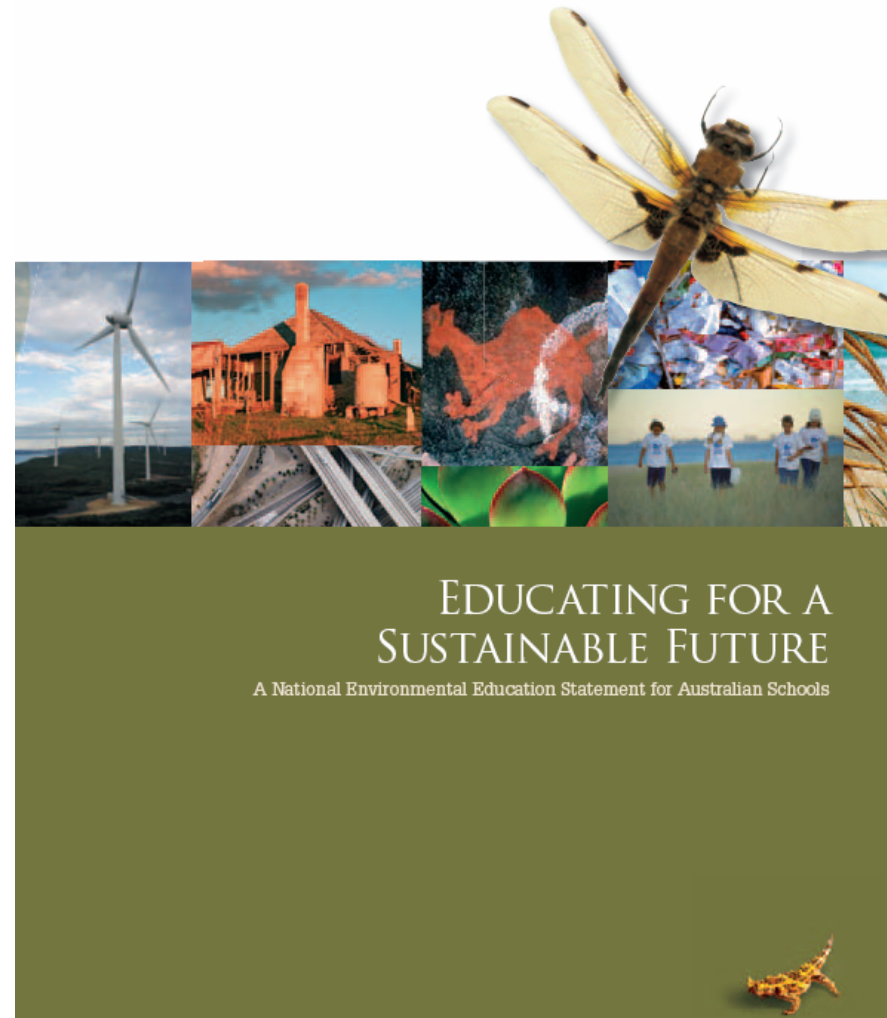


Australian Government

'Educating for a Sustainable Future'

**a National Education Statement
for Australian Schools**

**- developed by the National
Environmental Education
Network (NEEN)**



NSW Department of Education & Training

NSW Public Schools – Leading the Way www.det.nsw.edu.au

Mark Caddey
Sustainable Schools Coordinator
Curriculum K-12 Directorate



**Sustainable Schools partnership
across all states and territories in
Australia – ‘AuSSI’**

*‘For all Australian schools
to work toward becoming sustainable’*

**Pilot Programs 2002-05
NSW, Victoria & Queensland**

Programs in all states & territories from 2007

AuSSI is a working party of the NEEN



**Australian
Sustainable
Schools
Initiative**

NSW Department of Education & Training

NSW Public Schools – Leading the Way www.det.nsw.edu.au

Mark Caddey
Sustainable Schools Coordinator
Curriculum K-12 Directorate



‘AuSSI’

www.environment.gov.au/education/aussi

Website that brings together the programs from across Australia with resources and case studies

Partnership document between the states, territories and commonwealth

Collaboration with web resources

Adapting and sharing

Increased program support from 2008



Australian
**Sustainable
Schools
Initiative**

NSW Department of Education & Training

NSW Public Schools – Leading the Way www.det.nsw.edu.au

Mark Caddey
Sustainable Schools Coordinator
Curriculum K-12 Directorate





Sustainable Schools NSW website

www.sustainableschools.nsw.edu.au

Main portal for all sustainable Schools work in NSW
and in negotiation with AuSSI partners to adapt

- Student learning resources
- Monitoring tools – energy, water, materials
- School Environmental Management Plan template
- School Case studies



Learning Resources

School planning

Student activities

Audit tools

Curriculum linkages



NSW Department of Education & Training

NSW Public Schools – Leading the Way www.det.nsw.edu.au

Mark Caddey
Sustainable Schools Coordinator
Curriculum K-12 Directorate



Sustainable Schools NSW > home (DNN 4.4.1) - Microsoft Internet Explorer

File Edit View Favorites Tools Help

Back Forward Stop Refresh Home Search Favorites RSS Mail Print Stop abc

Address http://www.sustainableschools.nsw.edu.au/Default.aspx?tabid=36 Go

Links AuSSI CEE DECC EE Unit website SEEN SMH SS NSW TaLe PLC Zerofootprint Thailand Excursions Policy Windows Marketplace

Logout | marcus caddey Go >

sustainableschools nsw

Home About Sustainable Schools Resource Centre Developing a plan Our Community

HOME

- Overview
- Organisations
- Join Us Online
- Contact Us
- Using this Site

Welcome to Sustainable Schools NSW



Sustainable Schools NSW aims to support all schools, their partners and the community in realising a positive environmental vision. Through a School Environmental Management Plan, your school community can implement, review and celebrate sustainability education initiatives.

The site has been developed for teachers, principals, students, school communities and other organisations that support schools.

What's New



Student Activities
Examine the waste bills for the schools. Download the Excel chart activity sheet and enter data

Why join Sustainable Schools NSW?
By registering on this site, you will automatically become a member of the network of schools and t

What's on this site?
The School Environmental Management Planning tool and Resource Centre provides school commun

What's on this site?

The **School Environmental Management Planning tool** and **Resource Centre** provides school communities with planning tools and resources to support student learning.

Register now and share your school's stories and your organisations resources.

How to use this site

This site provides guidance for schools and their communities planning sustainability initiatives, tools to help implement actions, review and celebrate their achievements.

More>

What's new?

For Sustainable School NSW highlights see the 'What's New' column

Participating Organisations

Sustainable schools are achieved through working together. Find out how **Sustainable Schools NSW is managed** and **how your organisation can participate**

Done Internet

Start Deleted Item... 2 Windows ... Microsoft Po... Document2 - ... Sustainable ... EN << 7:41 AM



Conduct an energy snapshot survey

Being able to measure and describe energy use is the first step in managing and reducing consumption. This tool can be used by students in the classroom, school or home. After a baseline level of energy use is known, students can investigate energy use under different conditions and report on changes that can be introduced.

Student Activities

Use the [student activity sheet](#) to find out how energy is being used around the school. Enter the details in the [Excel chart](#). Conduct the investigation under different conditions and see how your energy use changes. Read the school electricity meter and track changes.

Teachers Tips

The [School Energy Snapshot Survey process](#) outlines how to undertake a snapshot of the school's energy use. This will help to identify ways to save energy around the school.

Case Studies

- [Middle Harbour Public School](#)

Other Links

Do the [getting ready for a snapshot review - risk assessment](#)

For [more information on energy](#) search through the resource centre.

School Energy Audit sheets

sustainableschools nsw



APPLIANCE SURVEY SHEET

Use this form to record how energy is used in your school.

Appliance	Number of appliances	Average wattage	Hours used per day	Number of days used per year
Office light fitting		65		
Small air conditioner		2000		
Large air conditioner		6500		
Ceiling fan		100		
Computer		300		
Laser printer		850		

NSW Department of Education & Training

NSW Public Schools – Leading the Way www.det.nsw.edu.au

Mark Caddey
Sustainable Schools Coordinator
Curriculum K-12 Directorate



Aims

Increase

- Integrating Environmental Education activities with classroom programs
- Learning Resources linked to syllabus statements
- Learning experiences and assessments linked



NSW Department of Education & Training

NSW Public Schools – Leading the Way www.det.nsw.edu.au

Mark Caddey
Sustainable Schools Coordinator
Curriculum K-12 Directorate



School Planning

School Environmental Management plan

- Help schools identify environmental issues
- Sets environmental goals
- Supports links to student learning
- Integrates learning resources



NSW Department of Education & Training

NSW Public Schools – Leading the Way www.det.nsw.edu.au

Mark Caddey
Sustainable Schools Coordinator
Curriculum K-12 Directorate



On-line template

12 questions

Formats report

Develops action plans

Monitor and report

Why develop a Sustainable School plan?



A School Environment Management Plan or SEMP is a way to integrate environmental learning into all aspects of the school. A good plan links student learning to the environmental objectives of the school community. It also support schools in achieving long term environmental and educational goals through short term actions.

Tips for good planning

Schools are encouraged to plan through a broad consultation process with all in the school community. Developing a plan this way may take a little longer but will achieve greater ownership and a willingness by the school community to implement it. [More>](#)

Writing a SEMP

The on-line School Environment Management Plan (SEMP) builder will guide you through a process and format a plan. A meeting with members of the school community first will give you the information you need to build your SEMP on-line. Get planning, [start your SEMP](#) now!

Case Studies and resources

Find out how others have written their plans and review a range of planning tools. [More>](#)

Get involved and write a SEMP

Register and start to develop your plan or share the plan your school has already developed. [More>](#)

[Already registered? start planning or sharing](#)



Action Plans Waste in the school grounds Indicator: Awareness of waste issues in students

Strategy	Action	Time	Resources	Indicators	Responsibility
Curriculum Strategies					
Review teaching programs	Stage 3 teachers to review the Science & technology outcomes/activities in the current 'Our Place' unit to include local bushland / ecosystem study, leading to revegetation action	2007	Professional Learning time	Present & discuss at staff meeting	Stage 3 teachers
Resource Management					
Implement new bin systems	Design & tech task Stage 4	Term 3	D & T teachers	Enviro team & D & T teachers	Enviro team
Audit waste	teachers PD	2007	curric team	teachers	principal
Participate in waste related events	no waste lunch	2007	litter monitors	lunch audits,	classroom teachers
Grounds Management					
Undertake grounds planning	Student investigate, describe and develop a report on the bushland area. Develop revegetation plan with council staff. Implement planting activity	2007	Council staff, plants & equipment	Stage 3 teachers	Stage 3 teachers, council staff

HCC Regional EE Strategy

- Improving coordination of EE services to get the best value for schools
- Providing QT resources that fill curriculum gaps
- Meeting professional development needs for teachers



HCC Regional EE Strategy

- Improving coordination of EE services to get the best value for schools
- Providing QT resources that fill curriculum gaps
- Meeting professional development needs for teachers



Major Directions

- Working towards joint on-line promotion and resource support
- Energy and water two major strands
- Commitment to involve students in managing and monitoring energy and water consumption
- Recognised climate change as an urgent issue. Schools need help understand future impacts



Water Focus for Central Coast schools

- Installation of water smart metres to allow real time monitoring of water consumption
- Water Tight, a one day program offered to schools through sponsorship from Local government
- Platypus Pete, home-based research program



Energy focus for Hunter schools

- Through Newcastle Council 5 Newcastle High Schools selected for installation of Climate Cam for Schools, students download real-time information about energy consumption for their school.
- Establishment of HCC Climate Change learning community



Thank you

Mark Caddey
Sustainable Schools Coordinator
mark.caddey@det.nsw.edu.au

Chris Prietto
Principal, Wetlands Education Centre
chris.prietto@det.nsw.edu.au

NSW Department of Education & Training

NSW Public Schools – Leading the Way www.det.nsw.edu.au

Mark Caddey
Sustainable Schools Coordinator
Curriculum K-12 Directorate

